

*IN COVINGTON'S ASCENT DISTRICT*  
*The Monarch Tool Coin & Security Building*



***103-113 East Fourth Street***

- Improvement ready 19,814 Square Foot 2 Story Brick Structure
- Turn the 20th Century Wall Street Character
- Includes 9,242 Square Foot 28 Car Parking or Valet Garage
- 2,500 Pound Capacity Freight Elevator

*F*ronting 121 Feet on Fourth on .54 acres, this prominent structure allows most commercial uses within the desirable Covington Historic Overlay District. Finish knowledge of GBBN Architects may expedite use feasibility studies. Financing thru owner may be available for a credit worthy use. The Main Floor foot print is 108'x175'

**Quoting: \$795,000**

All information contained herein while believed to be accurate is not warranted.



***Exclusively Represented By: Gail S. Coughlin***

***Mobile: 604-1731***

***www.gcoughlin.com***



**COLDWELL BANKER WEST SHELL**

OWNED & OPERATED BY NRT, INC.





*Clear Span  
Trusses*



*Notable  
Inlaid Tile*



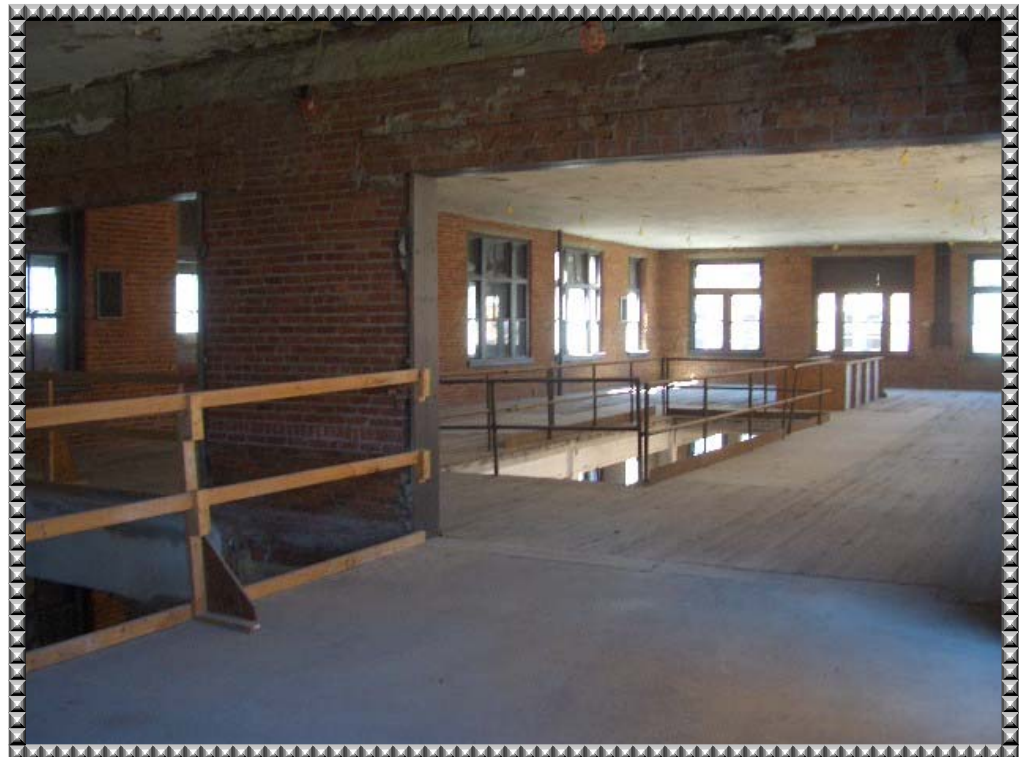
*Hardwood*



*Natural  
Light*



*Exposed  
Brick*



*High  
Ceilings*



*Newer  
Glass  
Block*



*Support  
Members*

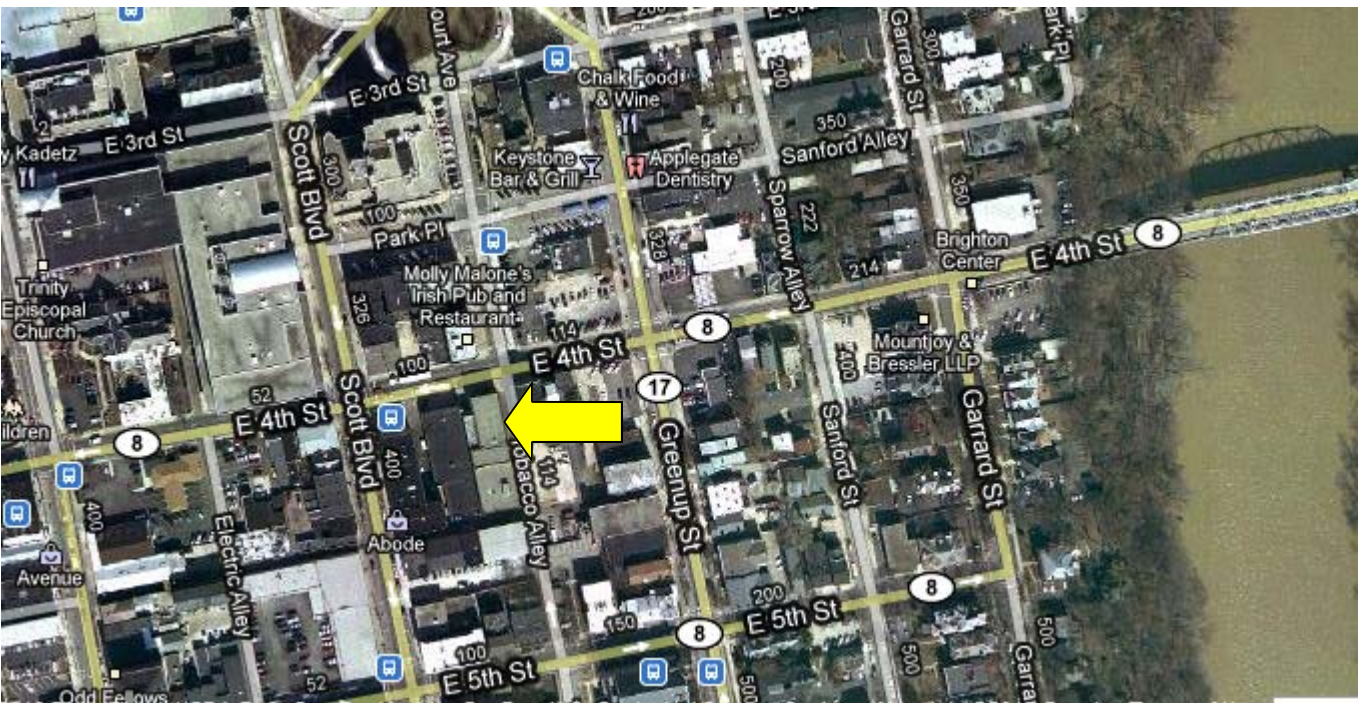
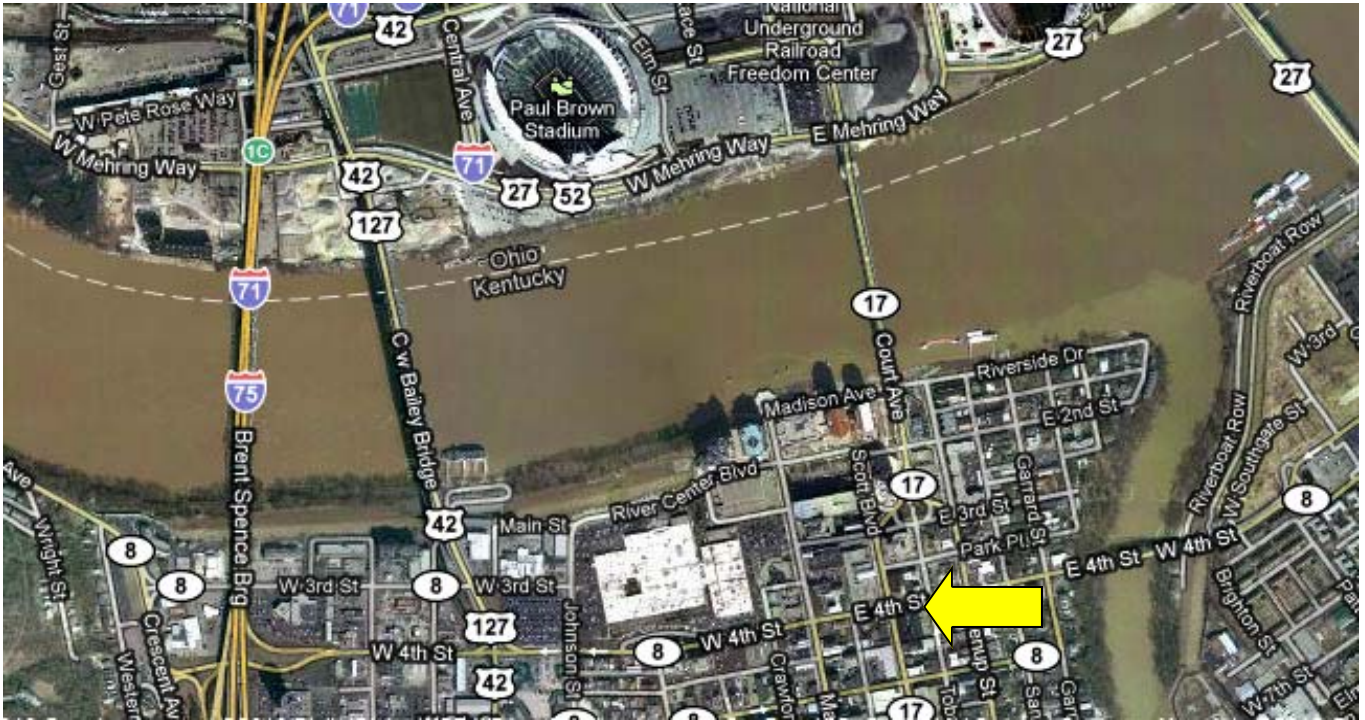


*The Ascent  
&  
Covington  
Development*

*Stimulates  
maximum  
growth in  
today's world*



# Arial View of Property



NOTE: ALL INFORMATION CONTAINED HEREIN BELIEVED TO BE ACCURATE BUT IS NOT WARRANTED